



Corfield Street, London, , E2 0DP

£350,000

Elms Estates are pleased to offer to the market For Sale this Amazing One Double Bedroom Apartment located on the third floor Floor of this Beautiful Victorian Building.

The property is situated just off Bethnal Green Road on a delightful street with numerous Green Spaces such as Weaver's Fields, Bethnal Green Gardens, Museum Gardens, St Bartholmew Gardens within easy reach. It has Excellent Transport Links such as Bethnal Green Underground & Overground Stations close by. It is a short walk to the famous Brick Lane & Shoreditch High Street and close to many superb Local Amenities and an abundance of Shops, Restaurants and Cafes.

Internally the property is spacious and naturally light throughout with a good size lounge, Modern fitted kitchen, One double bedroom and Contemporary bathroom. The property is finished to a high standard throughout and offered to the market on a CHAIN FREE basis.

For more information or to arrange a viewing please do not hesitate to call in and speak with one of our Property Consultants.



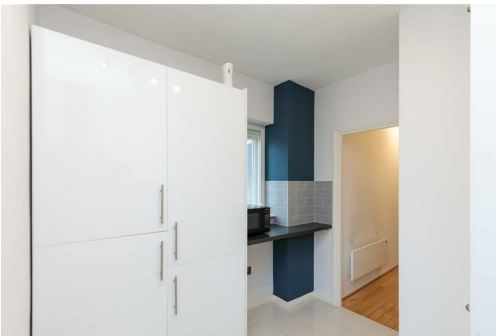
Reception Room
12'1" x 12'1" (3.7 x 3.7)

Kitchen
9'2" x 9'2" (2.8 x 2.8)

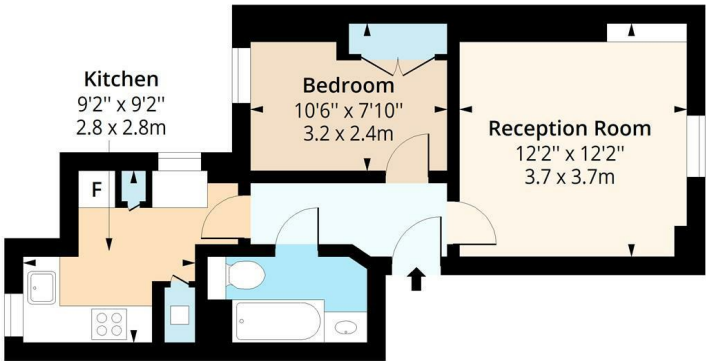
Bedroom
10'5" x 7'10" (3.2 x 2.4)

Bathroom

Material Information
Tenure: Leasehold
Length Of Lease: Approx 92 Years remaining
Annual Ground Rent: £ included in service charge
Annual Service Charge: £1,020.00
Council Tax Band: B



Corfield Street, E2
Approx. Gross Internal Area 416 Sq Ft - 38.65 Sq M



Third Floor
Floor Area 416 Sq Ft - 38.65 Sq M

Floor plan is for illustrative purposes only and is not to scale. Every attempt has been made to ensure the accuracy of the floor plan shown, however all measurements, fixtures, fittings and data shown are an approximate interpretation for illustrative purposes only.
lplus.com

Energy Efficiency Rating		Environmental Impact (CO ₂) Rating	
Current	Potential	Current	Potential
Very energy efficient - lower running costs		Very environmentally friendly - lower CO ₂ emissions	
(92 plus) A	86	(92 plus) A	
(81-91) B		(81-91) B	
(69-80) C	58	(69-80) C	
(55-68) D		(55-68) D	
(39-54) E		(39-54) E	
(21-38) F		(21-38) F	
(1-20) G		(1-20) G	
Not energy efficient - higher running costs		Not environmentally friendly - higher CO ₂ emissions	
England & Wales		England & Wales	
EU Directive 2002/91/EC		EU Directive 2002/91/EC	